

Supporting Information

A NEW CHROMONE DERIVATIVE FROM AN ENDOPHYTIC FUNGUS *XYLARIA* sp. ECN212

Ken-ichi Nakashima,^{a*} Junko Tomida,^b Yoshiaki Kawamura,^b and Makoto Inoue^a

^aLaboratory of Medicinal Resources, School of Pharmacy, Aichi Gakuin University, 1-100 Kusumoto-cho, Chikusa-ku, Nagoya, Aichi 464-8650, Japan.

^bLaboratory of Microbiology, School of Pharmacy, Aichi Gakuin University, 1-100 Kusumoto-cho, Chikusa-ku, Nagoya, Aichi 464-8650, Japan. E-mail: nakasima@dpc.agu.ac.jp

Table of Contents

Fig. S1	A phylogram obtained from ITS of rDNA sequences.	...1
Fig. S2	A phylogram obtained from D1/D2 domain of 26SrRNA sequences.	...2
Fig. S3	¹ H NMR spectrum of 1 in CDCl ₃3
Fig. S4	¹³ C NMR and DEPT spectra of 1 in CDCl ₃4
Fig. S5	DQF-COSY spectrum of 1 in CDCl ₃5
Fig. S6	HSQC spectrum of 1 in CDCl ₃6
Fig. S7	HMBC spectrum of 1 in CDCl ₃7
Fig. S8	NOESY spectrum of 1 in CDCl ₃8
Fig. S9	1D NOE experiments of 1 in CDCl ₃9

Genus *Xylaria*

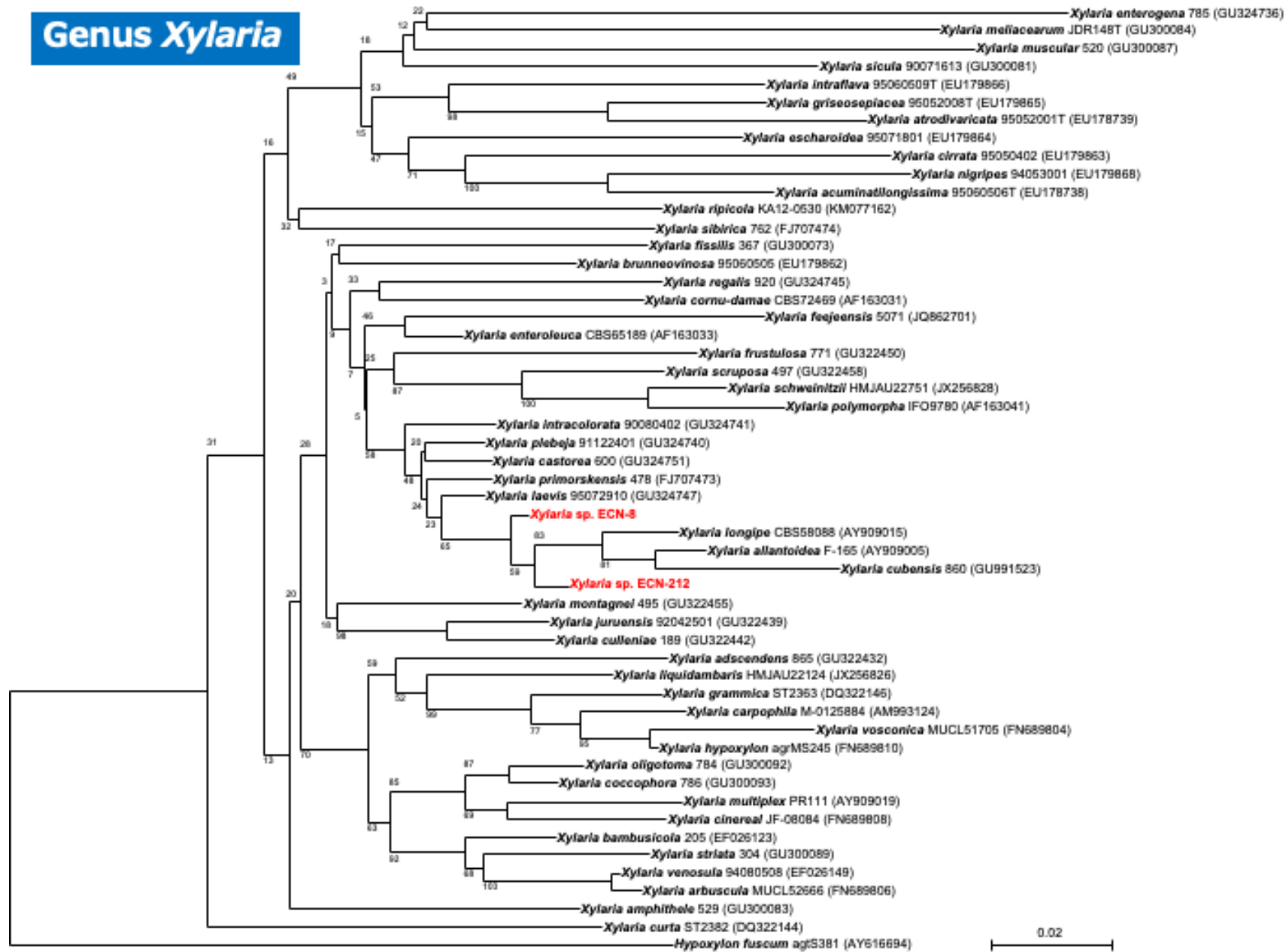


Fig. S1 A phylogram obtained from ITS of rDNA sequences.

Genus *Xylaria*

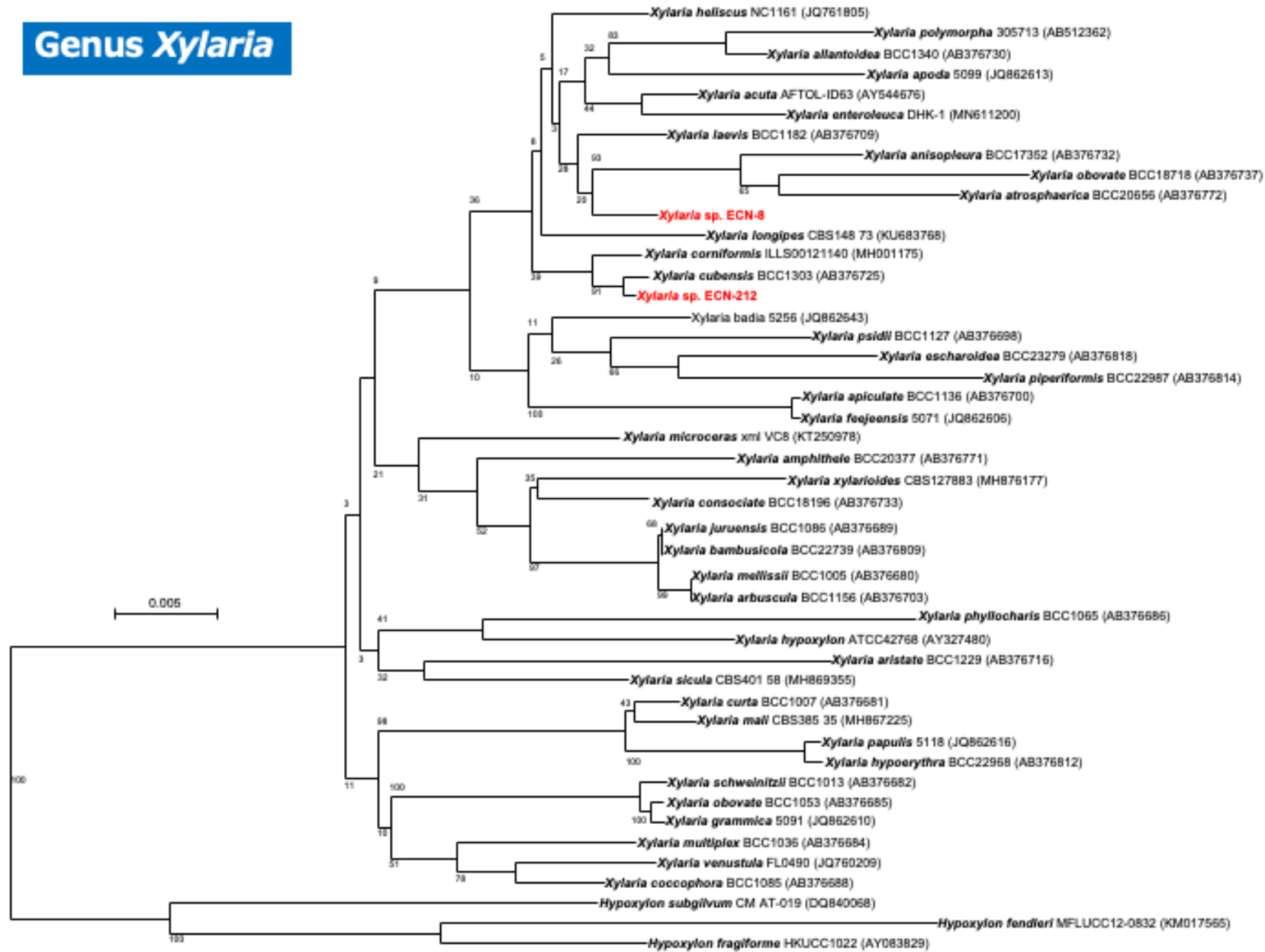


Fig. S2 A phylogram obtained from D1/D2 domain of 26SrRNA sequences.

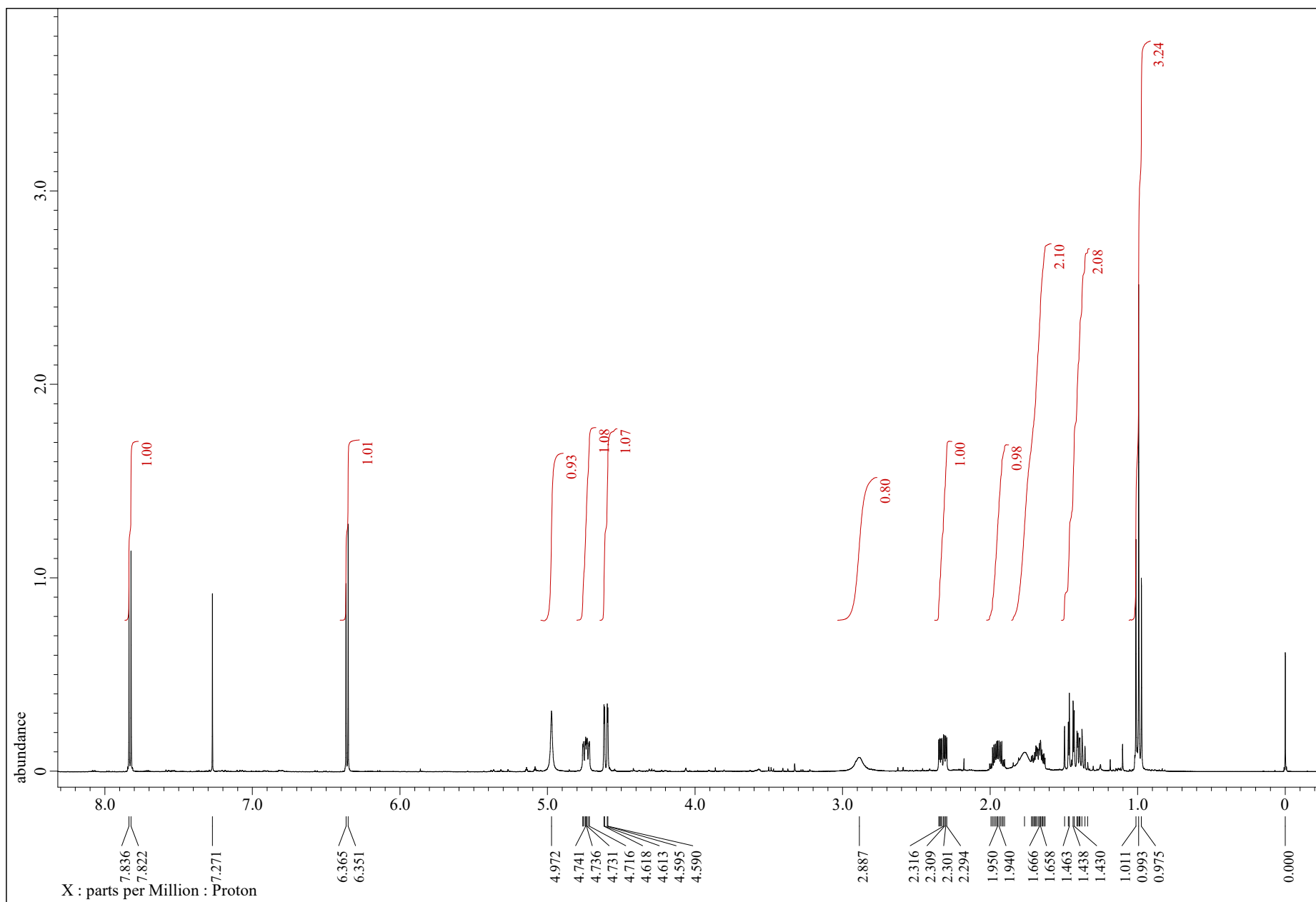


Fig. S3 ^1H NMR spectrum of **1** in CDCl_3 .

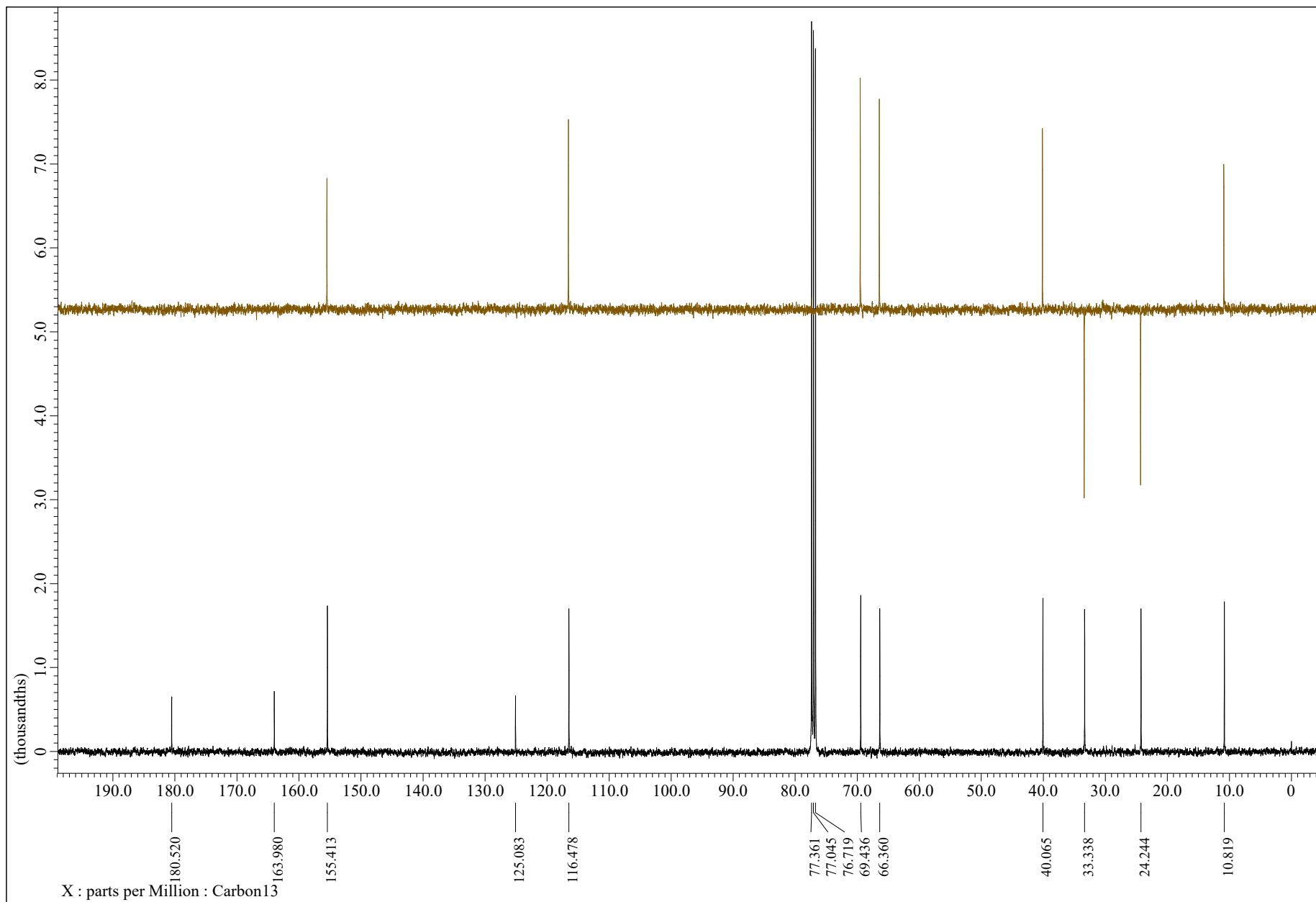


Fig. S4 ^{13}C NMR and DEPT spectra of **1** in CDCl_3 .

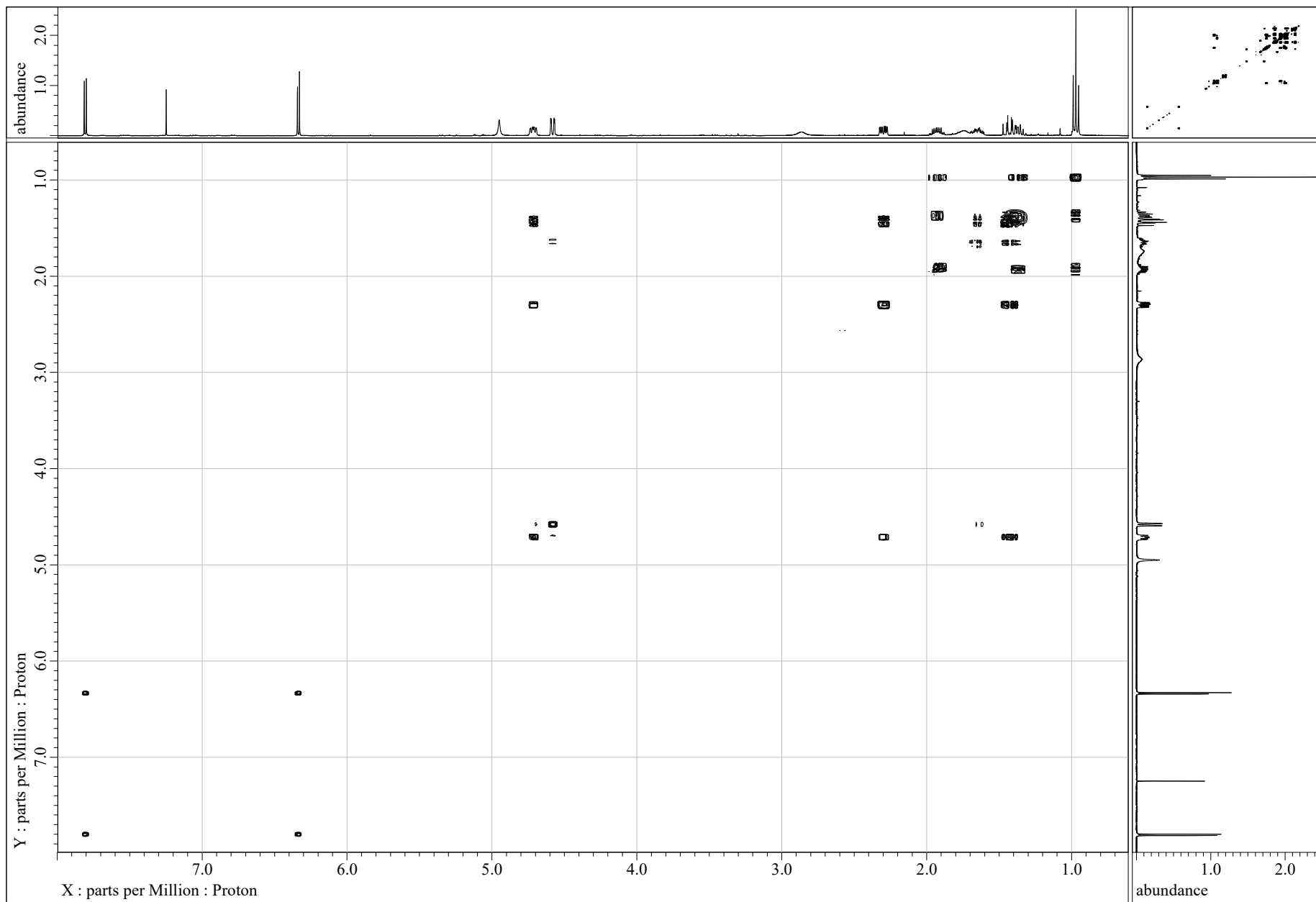


Fig. S5 DQF-COSY spectrum of **1** in CDCl₃.

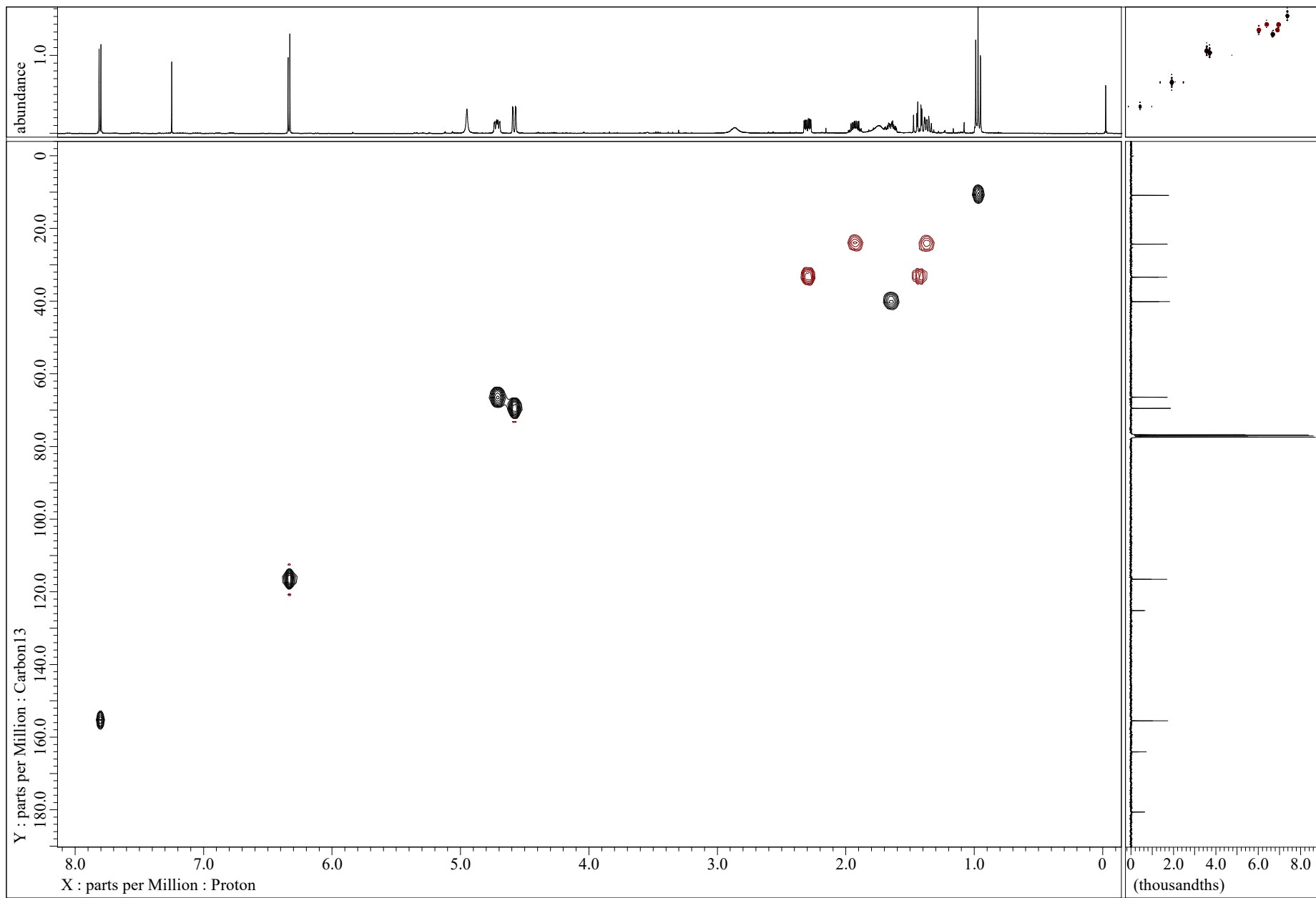


Fig. S6 HSQC spectrum of **1** in CDCl₃.

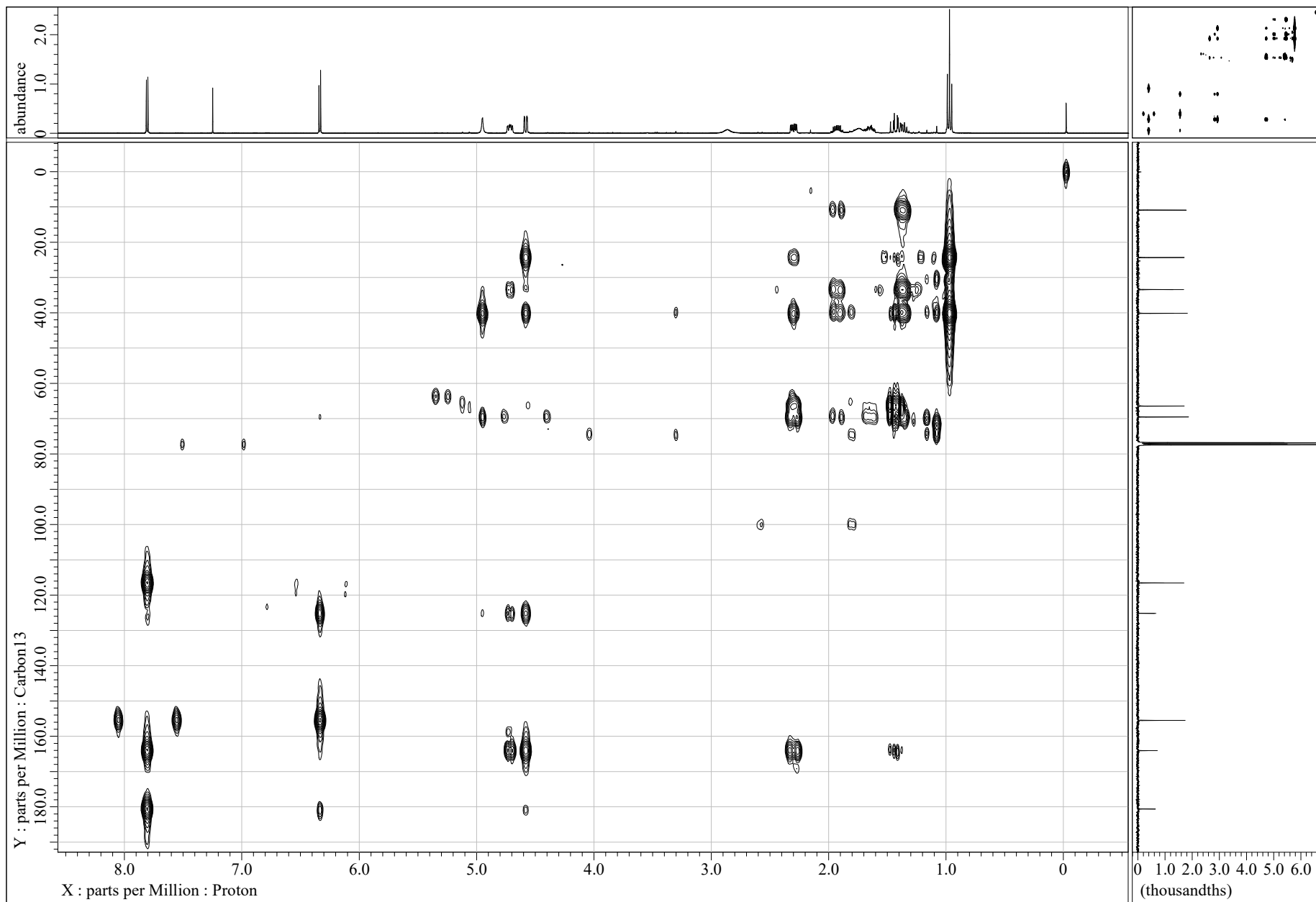


Fig. S7 HMBC spectrum of **1** in CDCl₃.

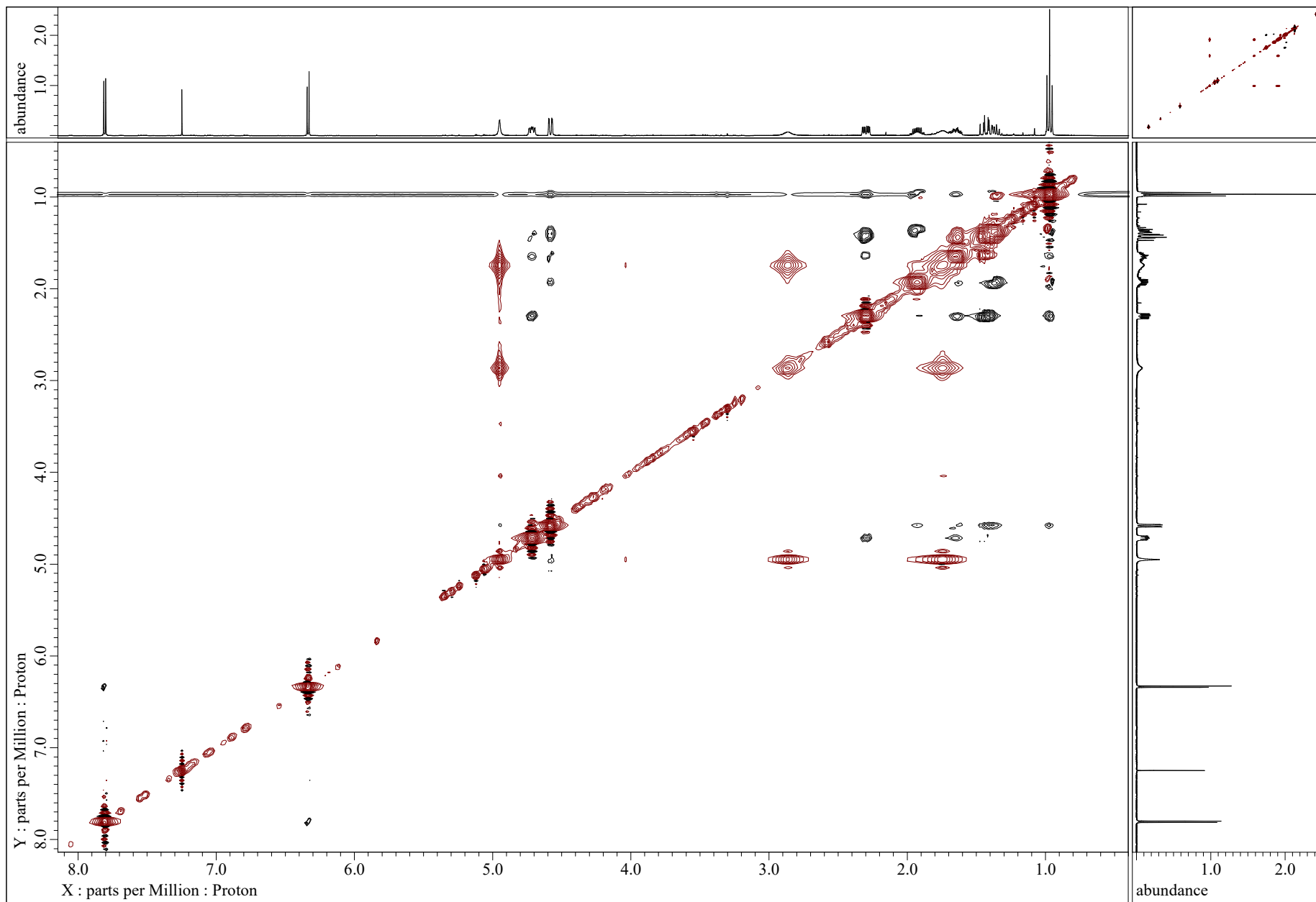


Fig. S8 NOESY spectrum of **1** in CDCl_3 .

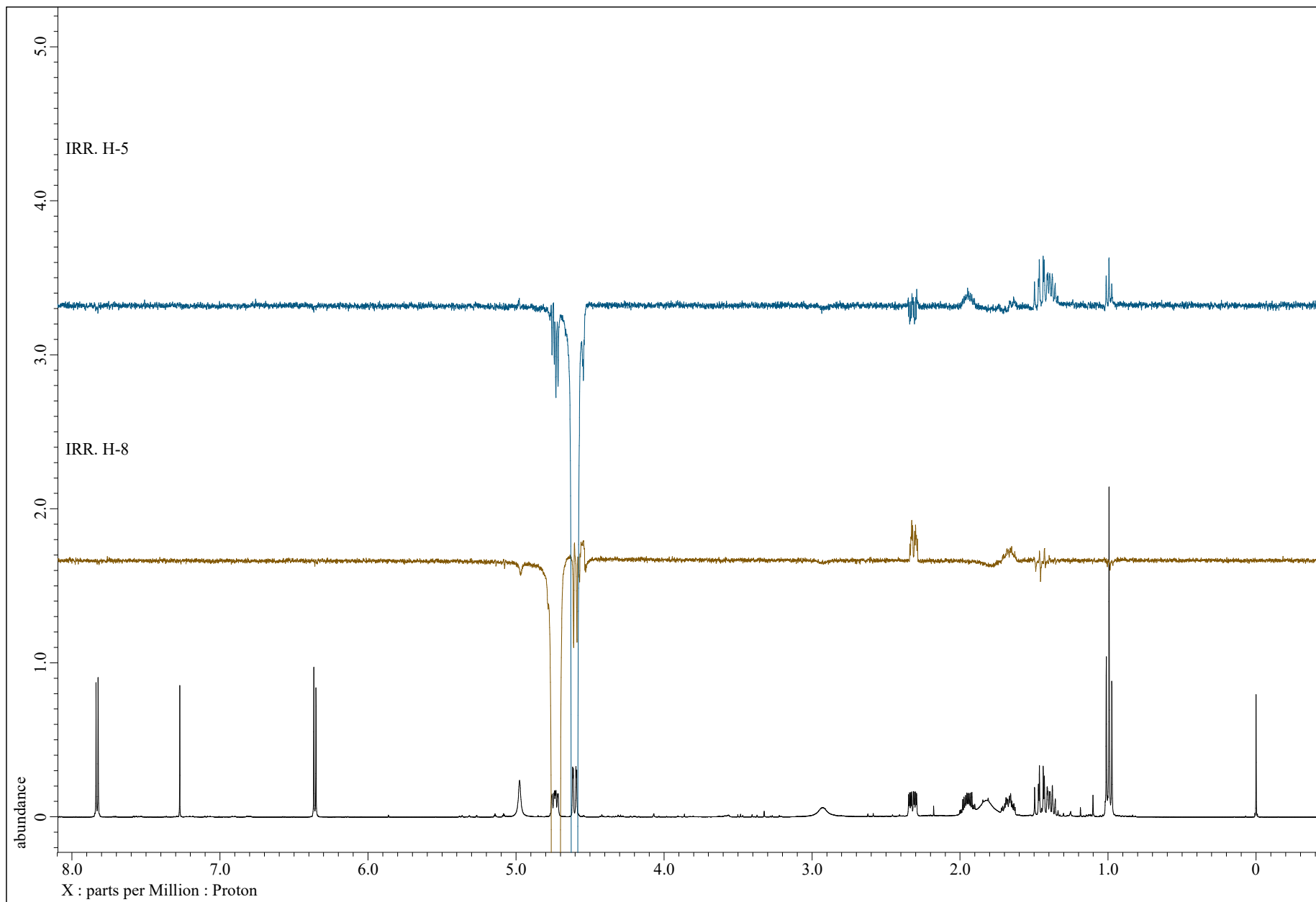


Fig. S9 1D NOE experiments of **1** in CDCl_3 .