

Molecular epidemiology of β -thalassemia in Pakistan: Far reaching implications

Saqib H. Ansari, Tahir S. Shamsi, Mushtaq Ashraf, Tasneem Farzana, Muneera Bohray, Kousar Perveen, Sajida Erum, Iqra Ansari, Muhammad Nadeem Ahmed, Masood Ahmed, Faizan Raza

Department of Pediatric Hematology & Molecular Medicine, National Institute of Blood Diseases, Karachi, Pakistan

BACKGROUND: β -Thalassaemia, an autosomal recessive hemoglobinopathy, is one of the commonest genetically transmitted disorders throughout the world. Collective measures including carrier identification, genetic counseling and prenatal diagnosis are required for preventing β -thalassemia.

AIM: To achieve this objective, Identification of the spectrum of genetic mutations, especially for various ethnic backgrounds in Pakistan. Therefore, we designed a cross sectional prospective study to identify the frequency of various gene mutations in different ethnic groups of Pakistan.

MATERIALS AND METHODS: Over a 5-year period, DNA from 648 blood samples {including specimens of chorionic villus sampling (CVS)} were analyzed for the twelve most common β -thalassemia mutations found in the Pakistani population by a Multiplex amplification refractory mutation system (ARMS). Each sample was analyzed for the mutation as well as the normal gene, appropriate with negative and positive controls, and reagent blanks.

RESULTS: Out of 648 samples mutations were identified in 640 (98.75%) samples by multiplex ARMS. 8 common β -thalassemia mutations were identified in 8 different ethnic groups accounting for 93.9% of the β -thalassemia alleles.

CONCLUSIONS: Based on the outcome of this study a cost effective proposal is formulated for detection of β -thalassemia mutations.

Key words: Gene frequency, genetic epidemiology, prenatal diagnosis, thalassaemia prevention

Introduction

Thalassemia comes from a Greek word "*Thalas*" meaning the sea and "*emia*" for blood. The word came into use as thalassemia was originally described in countries bordering the Mediterranean Sea. It was not recognized as an entity till 1925 when Cooley and Lee described a syndrome occurring early in life associated with splenomegaly and bony deformities. Thalassemias are a heterogeneous group of inherited disorders of hemoglobin synthesis, resulting in life-threatening anemia and requiring regular blood transfusion for survival.^[1] It's particularly associated with people of Mediterranean, Indian subcontinent, and Middle East origin. The World Health Organization (WHO) has identified control of hemoglobinopathies, particularly β -thalassemia, in developing world as a priority.^[2] An estimated 5000-9000 children with β -thalassemia are born per year, although no documentary registry is available in Pakistan. The estimated carrier rate is 5-7%, with 9.8 million carriers in the total population.^[3]

With gradual control of malnutrition and communicable diseases, β -thalassemia major patients who earlier died young are now surviving long enough to seek medical attention. In developing countries like Pakistan, this poses an increasing burden for health-care services as adequate blood transfusions with effective iron chelation and bone marrow transplantation is affordable for just a few; therefore, prevention has been demonstrated to be the way forward. Effectiveness of a 20-year control program in Sardinia is evidenced by reduction of the

Access this article online

Quick Response Code:



Website:

www.ijhg.com

DOI:

10.4103/0971-6866.100762

Address for correspondence: Dr. Saqib Hussain Ansari, Paediatric Haematologist, National Institute of Blood Diseases, ST 2/A, Block 17, Gulshan-e-Iqbal, KDA Scheme 24, Karachi, Pakistan. E-mail: ansarisajib@hotmail.com

birth rate of thalassemia major from 1:250 live births to 1:4000.^[4] In 1995, 1999 and 2004, 296, 94 and 56 β -thalassemia homozygote, respectively, were born (2.53, 1.07 and 0.82 patients per 1000 births) - thanks to a 10-year program in southern Iran.^[5] Population screening, genetic counseling, prenatal diagnosis, and option of terminating affected pregnancies remain the mainstay strategy to devise a control program, and investigating the underlying molecular defects in β -thalassemia is an important prerequisite for such programs.

Currently, 217 causative molecular defects have been described so far in the β -globin gene causing β -thalassemia.^[6] About 20 mutations account for 90% of β -globin genes in the world, and it is noted that each ethnic population has its own unique set of most frequent mutations. Previously, there have been few studies investigating the spectrum of β -thalassemia mutations in various regions and ethnic groups of Pakistan.^[7,8] The aim of this study is to identify the frequency of various mutations in Karachi, the largest cosmopolitan city of Pakistan with a population in excess of 10 million, having a significant representation of all the major ethnic groups and to formulate a comprehensive and affordable mutation detection strategy for control of β -thalassemia.

Materials and Methods

The study was conducted at Department of Pediatric Hematology and Molecular Medicine, National Institute of Blood Diseases (NIBD) in Karachi. The study protocol was approved by the ethics committee at NIBD, and an informed consent was taken from all patients / parents. The studied population included members of the 5 major ethnic groups in Karachi: Punjabi, Pathan, Sindhi, Baluchi, Immigrants (from India after the 1947 partition of subcontinent) and others like Saraikees, Kashmiri, Memon, and Hazara as well. Over a period of 5 years, NIBD collected venous blood samples (in EDTA) from 466 individuals having at least 1 affected family member known to have β -thalassemia major/HbE- β -thalassemia/ HbE homozygotes/ β -thalassemia trait. Chorionic villus

sampling (CVS) at 11 to 15 weeks gestational age for 143 couples referred by thalassemia clinics (for pregnancies at risk of having affected child) was also used to obtain allele information. In all, 648 mutated alleles were identified. The diagnosis of β -thalassemia trait, β -thalassemia major, and Hb E thalassemia were established from clinical data, hematological indices, and hemoglobin electrophoresis (cellulose acetate hemoglobin electrophoresis done by HELENA SAS-MX manual gel tank system), DNA was extracted from whole blood by using Genomic DNA Purification Kit (Gentra system USA). For detection of mutations, a PCR-based method Multiplex ARMS was used, which previously has been used as a mutation-screening tool as mentioned in a number of publications.^[9,10] Primers were designed for simultaneous detection of the following previously-described mutations^[7,8,10] in a single reaction: IVS 1-5, Fr 8-9, IVS 1-1, Cd-30, Cd-5, Del 619bp, Cd-15, Fr 41-42, Fr 16, and Cap +1 along with 2 Hb variants: HbS and HbE.

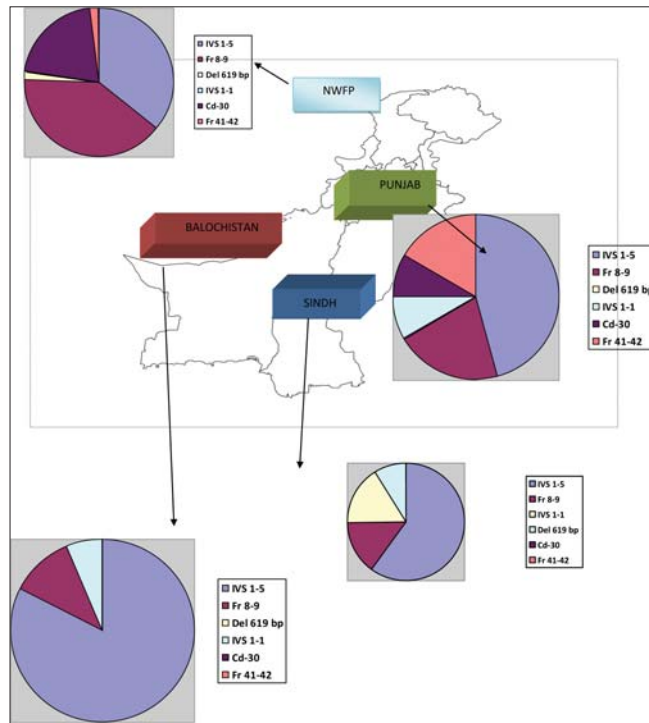
Results

By using the methods mentioned above, mutations were characterized in 640 (98.75%) of the alleles studied; however, there were 8 instances where the allele remained uncharacterized. The study population included 53% males and 47% females. Also, included were 143 CVS specimens, which showed homozygosity in 45 CV samples, whereas 89 of the CV biopsies showed mutations in 1 allele and were diagnosed as carriers; 9 were normal. The overall distribution of the β -thalassemia mutations in different ethnic groups of Pakistan settled in Karachi is summarized in Table 1. The genetic heterogeneity in Karachi is reflected by the identification of all the common β -thalassemia alleles and 2 Hb variants, but following 8 mutations were more common: IVS 1–5, Fr 8-9, Del 619 bp, IVS 1-1, Fr 41-42, Cd-30, Cd-5 and Cd-15, accounting for 93.9% of the β -thalassemia alleles. However, the distribution was uneven as depicted in Figure 1.

Although IVS 1–5 was the most common mutation (40.89% of the sample), its frequency varied from 20% in the immigrant (from India) population to 76.9% in the Balochis. It should be noted that southwest Iran, which

Table 1: Distribution of β -thalassemia mutations in Pakistan's various ethnic groups

Mutation	Sindhi	Baloch	Pathan	Punjabi	Immigrant (India)	Saraiklee	Memon	Hazara	Total
IVS 1-5	134	60	19	22	13	3	14	-	265
Fr 8-9	38	7	21	10	12	8	6	-	102
Del 619	34	-	1	-	7	1	29	-	72
IVS 1-1	30	4	-	4	5	-	10	-	53
Cd-30	30	-	11	4	1	2	4	-	52
Fr 41-42	9	-	1	8	12	2	-	3	35
Cd-5	4	-	8	1	1	-	-	-	14
Cd-15	8	2	-	4	2	-	-	-	16
Cap +1	2	-	1	2	2	-	1	-	8
Fr 16	-	3	3	-	-	-	0	-	6
Hb S	-	3	-	-	1	-	-	-	4
Hb E	5	-	-	4	3	-	1	-	13
Uncharacterized	-	-	2	1	4	1	-	-	8
Total	294	78	67	60	63	17	65	3	648

**Figure 1: Distribution chart**

shares border with Balochistan, also has a high prevalence of IVS 1-5.^[11] The second most frequent mutation was Fr 8-9, constituting 15.7% of the allele pool. Indeed, Fr 8-9 was the most common mutation in the Pathans (31.3%) as it was in people of Saraiklee origin (47%). Higher prevalence of Fr 8-9 in the Pathans has been reported previously also,^[7,8] but other studies^[12] have commented that IVS 1-5 is the most common mutation in southern

Punjab- the Saraiklee belt. This can be attributed to the small count of Saraiklee individuals in our study cohort. Deletion 619 bp was found to be the third most common, 11.11% and interestingly, it was identified most commonly (44.6%) in members of the Memon community. The same has been reported by Colah *et al.*^[13] in Gujarat, India as well for the Lohana community (historically, after accepting Islam, the Lohanas were titled as Memons).

Discussion

Pakistan is a country with a remarkable racial mix from a long history of invasions and commercial interactions, leading to considerable genetic diversity. This supplemented by a strong cultural preference for consanguineous marriage has been responsible for a relatively high prevalence of recessively inherited disorders like β -thalassemia. To sustain children affected with β -thalassemia, monthly blood transfusions accompanied by iron-chelation therapy is needed, and requirements for treating 1 annual birth cohort for 1 year are 90,000 units of blood plus 22 million dollars worth of deferoxamine.^[3] Genetic risk factor information such as identification of β -globin gene mutations should be integrated routinely into epidemiological studies,^[14] followed by genetic counseling and prenatal diagnosis to reduce birth rate of affected infants^[2,4] to undo the financial burden caused by this disease. We elucidate

with this study, the frequencies of different β -thalassemia mutations in the residents of Karachi of various origins. This city is the financial hub of the country, and therefore, people from all regions of Pakistan have migrated over here. Also are included the (post Indo-Pak partition) immigrants from India. The resultant genetic heterogeneity can be seen by the identification of all common β -thalassemia mutations. Results are coherent with statistics provided by Ahmed, *et al.*^[7] in 1996 by characterizing 1216 alleles and also with those given by Khan and Riazuddin^[8] who had analyzed 602 β -thalassemia mutations. These investigators narrated a spectrum of 19 mutations and found IVS 1-5 to be the commonest mutation with greater prevalence in Southern Pakistan, whereas Fr 8-9, the second most common mutation, was found more in Northern Pakistan. We also noted that 8 rather than 5 (as previously reported) mutations comprised 93% of the spectrum. Another facet pointed by this analysis is the heterogeneity of genetic spectrum in the immigrant (from India) population residing in Sindh. These people migrated from all parts of the present India at the time of partition of sub-continent and thus represent the same genetic versatility as has been reported by investigators from India,^[13] which itself has an ethnically diverse population. Because of the practice of endogamy, gene variants are trapped within extended family groupings and biradris. Lack of a national level screening program and the limited chances of success for changing the social structure on a large scale to avoid consanguineous marriages (which actually does not have a sound ethical footing as well^[15]) emphasize the need for a policy to provide both family studies and premarital or antenatal screening for the relatives of affected children. Knowing the specific mutation panels relevant for the various ethnicities will improve the feasibility of DNA diagnostics in developing countries like ours. Indeed, mutation micro mapping on a caste and biradri basis might serve the purpose even better as differences have been noted in this sub-classification as well.^[16] Efforts should be made to increase awareness about the available diagnostic facilities for the prenatal diagnosis in Pakistan.

Based on the outcome of our study, we have formulated a cost-effective proposal for detection of β -thalassemia mutations as shown in Figure 2. The

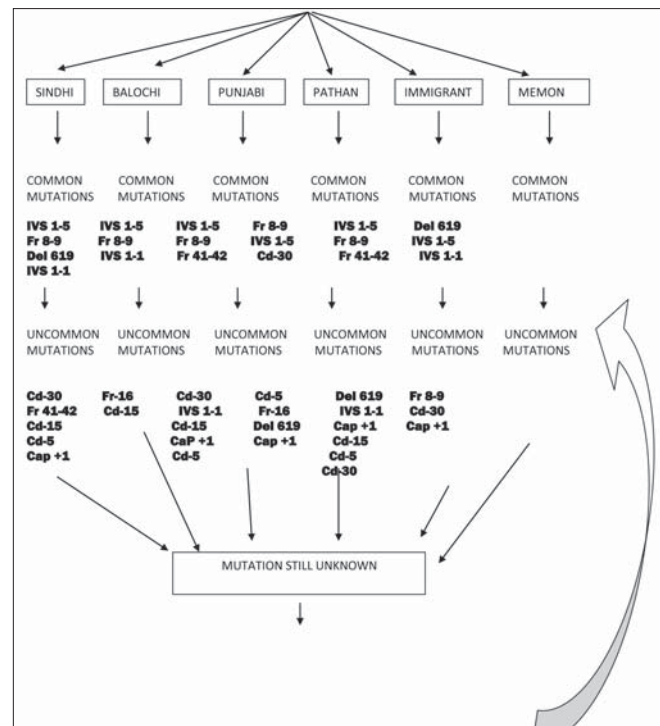


Figure 2: Individual with β -thalassemia trait based on hematological indices

strategy is based on first inquiring the ethnic background of the individual with β -thalassemia trait so that DNA can be 'triaged' to the 'common mutation panel' found in the particular ethnic group. If the mutation is not found in the common mutation panel, the DNA is further tested using the uncommon mutation panel. Lastly, it is also worth mentioning that genetic epidemiological studies like ours have more than local relevance- the information can be used in other countries like the USA, Canada, Europe, and Australia in which there is a major influx of Pakistani migrants who present as ethnic minorities for diagnosis, counseling, and management.

Take home message: IVS1-5 (40.89%), Fr8-9 (15.7%), and IVS1-I (8.17%), were the most common genetic mutations identified in Pakistan. Knowledge of the predominant mutation in a given ethnic group will not only help in developing a short panel of (population-specific) primers of mutations, thereby providing a cost-effective method for prenatal diagnosis, but also help the clinicians for genetic counseling and pregnancy termination.

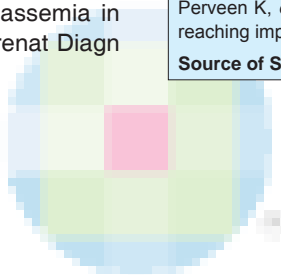
References

1. Weatherall DJ, Clegg JB. The Thalassemia Syndromes.

- 4th ed. Oxford: Blackwell Sci.; 2001.
2. Angastiniotis M, Modell B. Global epidemiology of hemoglobin disorders. *Ann N Y Acad Sci* 1998;850: 251-69.
3. Ahmed S, Saleem M, Modell B, Petrou M. Screening extended families for genetic hemoglobin disorders in Pakistan. *N Engl J Med* 2002; 347:1162-8.
4. Cao A, Rosatelli MC, Galanello R. Control of β -thalassemia by carrier screening, genetic counselling and prenatal diagnosis: The Sardinian experience. *Ciba Found Symp* 1996;197:137-51; discussion 151-5.
5. Karimi M, Jamalain N, Yarmohammadi H, Askarnejad A, Afrasiabi A, Hashemi A. Premarital screening for β -thalassemia in Southern Iran: Options for improving the program. *J Med Screen* 2007;14:62-6.
6. Baysal E, Carver MF. The β and δ thalassemia repository. *Hemoglobin* 1995;19:213-36.
7. Ahmed S, Petrou M, Saleem M. Molecular genetics of β -thalassemia in Pakistan: A basis for prenatal diagnosis. *Brit J Hematol* 1996;94:476-82.
8. Khan SN, Riazuddin S. Molecular characterization of β -thalassemia in Pakistan. *Hemoglobin* 1998;22:333-45.
9. Old JM, Varawalla NY, Weatherall DJ. Rapid detection and prenatal diagnosis of β -thalassemia: Studies in Indian and Cypriot populations in the UK. *Lancet* 1990;336:834-7.
10. Ahmed S, Saleem M, Sultana N, Raashid Y, Waqar A, Anwar M, *et al.* Prenatal diagnosis of β -thalassemia in Pakistan: Experience in a Muslim country. *Prenat Diagn* 2000;20:378-3.
11. Najmabadi H, Karimi-Nejad R, Sahebjam S, Pourfarzad F, Teimourian S, Sahebjam F, *et al.* The β -thalassemia mutation spectrum in the Iranian population. *Hemoglobin* 2001;25:285-96.
12. Baig SM, Azhar A, Hassan H, Baig JM, Kiyani A, Hameed U, *et al.* Spectrum of β -thalassemia mutations in various regions of Punjab and Islamabad, Pakistan: Establishment of prenatal diagnosis. *Haematologica* 2006;91:e13-5.
13. Colah R, Gorakshakar A, Nadkarni A, Phanasgaonkar S, Surve R, Sawant P, *et al.* Regional heterogeneity of β -thalassemia mutations in the multi ethnic Indian population. *Blood Cells Mol Dis* 2009;42:241-6.
14. Shpilberg O, Dorman J, Ferrell R, Trucco M, Shahar A, Kuller LH. The next stage: Molecular epidemiology. *J Clin Epidemiol* 1997;50:633-8.
15. Alwan A, Modell B. Community control of genetic and congenital disorders. EMRO technical publication series 24. Alexandria, Egypt: WHO Regional Office for the Eastern Mediterranean; 1997.
16. Hafeez M, Aslam M, Ali A, Rashid Y, Jafri H. Regional and ethnic distribution of β -thalassemia mutations and effect of consanguinity in patients referred for prenatal diagnosis. *J Coll Physicians Surg Pak* 2007;17:144-7.

Cite this article as: Ansari SH, Shamsi TS, Ashraf M, Farzana T, Bohray M, Perveen K, *et al.* Molecular epidemiology of β -thalassemia in Pakistan: Far reaching implications. *Indian J Hum Genet* 2012;18:193-7.

Source of Support: Nil, **Conflict of Interest:** None declared.



Author Help: Reference checking facility

The manuscript system (www.journalonweb.com) allows the authors to check and verify the accuracy and style of references. The tool checks the references with PubMed as per a predefined style. Authors are encouraged to use this facility before submitting articles to the journal.

- The style as well as bibliographic elements should be 100% accurate to get the references verified from the system. A single spelling error or addition of issue number / month of publication will lead to error to verifying the reference.
- Example of a correct style
Sheahan P, O'leary G, Lee G, Fitzgibbon J. Cystic cervical metastases: Incidence and diagnosis using fine needle aspiration biopsy. *Otolaryngol Head Neck Surg* 2002;127:294-8.
- Only the references from journals indexed in PubMed would be checked.
- Enter each reference in new line, without a serial number.
- Add up to a maximum 15 reference at time.
- If the reference is correct for its bibliographic elements and punctuations, it will be shown as CORRECT and a link to the correct article in PubMed will be given.
- If any of the bibliographic elements are missing, incorrect or extra (such as issue number), it will be shown as INCORRECT and link to possible articles in PubMed will be given.